



Whitmore Park Primary School

Child Protection and Safeguarding policy

Owner:	Published date:	September 2018
Approved by Headteacher:	Date:	
Approved by Chair of Governors:	Date:	November 2017
Date to be reviewed:	September 2018	

Contents

1. Definitions.....	3
2. Introduction.....	3
3. Roles and Responsibilities	5
4. Types of abuse	9
5. Responding to signs of abuse	12
6. Record-keeping	18
7. Photography and Images	18
8. Early Help	19
9. Staff training	19
10. Safer Recruitment.....	20
11. Allegations of abuse against staff	20
12. Promoting safeguarding and welfare in the curriculum	21
13. Children Looked After.....	22
14. Children with Special Educational Needs	22
15. Use of reasonable force	23
16. Children Staying with host families (see Annex E KCSIE).....	23
17. Summary	23
Appendix A	24
Appendix B - Further Safeguarding Information	25
Types of Abuse	25
Children missing from education, home or care	26
Private Fostering	26
Indicators of abuse.....	26

Policy last reviewed:	September 2017
Reviewed by:	Jacqueline McGibney
Shared with staff:	November 2017
Frequency of review:	Annually
Designated Safeguarding Lead:	Jacqueline McGibney
Deputy Designated Safeguarding Lead:	Amanda Morris
Named Governor for Safeguarding:	Deb Austin / Karl Miles
Chair of Governors:	Deb Austin
Vice Chair of Governors:	Karl Miles
Local Authority designated officer:	Angie Bishop Risk Management Co-ordinator and designated officer
Email address:	LADO@Coventry.gcsx.gov.uk
Telephone number:	(02476) 833 443
Designated Lead for Looked After and Previously Looked-After Children:	Jacqueline McGibney

1. Definitions

1.1. 'Safeguarding' is defined in Keeping Children Safe in Education (2018) as;

- protecting children from maltreatment;
- preventing impairment of children's health or development;
- ensuring that children grow up in circumstances consistent with the provision of safe and effective care; and
- taking action to enable all children to have the best outcomes.

1.2. 'Child Protection' is the intervention that occurs when children have been significantly harmed or are at risk of significant harm.

1.3. 'Child' refers to everyone under the age of 18.

1.4. 'Parent' refers to birth parents and other adults in a parenting role for example adoptive parents, step parents and foster carers.

1.5. 'Staff' or 'members of staff' refers to all teaching, non-teaching, support, supply, peripatetic, contract staff, governors, volunteers and trustees working in or on behalf of Whitmore Park Primary School.

2. Introduction

2.1. We recognise that safeguarding and child protection is an essential part of our duty of care to all students and all staff have a responsibility to provide a safe environment in which children can learn. We understand that safeguarding, child protection and promoting the welfare of all children is everyone's responsibility and everyone has a role to play in protecting children. We recognise that our school is part of a wider safeguarding system for children and work closely with other agencies to promote the welfare of children. We maintain an attitude of 'it could happen here' and will consider the wishes of, and at all times, what is in the best interests of each child.

2.2. The purpose of this policy is to;

- Promote safeguarding and child protection and to demonstrate Whitmore Park Primary School's commitment to keeping children safe;
- Provide all members of staff with the information required to meet their safeguarding duty and protect children from harm;
- Provide stakeholders with clear information relating to Whitmore Park Primary School's safeguarding and child protection procedures;
- Ensure that staff understand, can recognise and can respond to the indicators of abuse;
- Ensure that all staff are aware of their mandatory reporting duty in relation to Section 5B of the Female Genital Mutilation Act 2003; and
- Ensure that children are protected from maltreatment or harm.

2.3. Whitmore Park Primary School is committed to the following principles;

- All children have the right to be protected from harm.

- Children should feel safe and secure and cannot learn unless they do so.
- All staff are responsible for keeping children safe and have a responsibility to act if they think a child is at risk of harm.
- Working with other agencies is essential to promote safeguarding and protect children from harm.
- Early help and providing support to families and/or children as soon as a problem emerges is essential to improving outcomes for children and families.

2.4. Safeguarding aims

2.4.1. The safeguarding aims of Whitmore Park Primary School, in line with Keeping Children Safe in Education (September 2018) are to;

- work to identify children who are suffering or likely to suffer harm or abuse and act to protect them;
- work with relevant services and agencies to ensure that children are protected from harm;
- provide a learning environment for children which is safe and secure;
- teach children how to keep themselves safe and provide structures for them to raise concerns if they are worried or at risk of harm;
- ensure that we adhere to safer recruitment guidance and legislation, deal promptly with allegations of abuse against staff and take bullying and harassment seriously;
- train staff effectively in all safeguarding issues and in their responsibilities for identifying and protecting children that are or may be at risk of harm;
- recognise that all children may be vulnerable to abuse, but be aware that some children have increased vulnerabilities due to special educational needs or disabilities;
- maintain a robust recording system for any safeguarding or child protection information;
- ensure that everyone in Whitmore Park Primary School understands the safeguarding procedures; and to
- regularly review policies and procedures to ensure that children are protected to the best of our ability.

2.5. This policy adheres to the following documents;

- Keeping Children Safe in Education (September 2018)*¹
- Working Together to Safeguard Children (June 2018)*
- Guidance for Safer Working Practice for those working with children and young people in education settings (2015)
- What to do if you are worried a child is being abused: Advice for practitioners (2015)

2.6. Please note that there are a number of other documents (statutory and non-statutory) that inform our policy and practice. A list of these can be found in

¹ Guidance marked with an asterisk (*) is statutory

Annex A of Keeping Children Safe in Education (September 2018).

2.7. This policy should be read in conjunction with the following policies which can be found on the school's website;

Behaviour & Physical Restraint policy, e-Safety policy, Peer on Peer Abuse policy, Attendance policy, Whistle Blowing policy, Special Education Needs and Disability (SEND) policy, Supporting pupils with medical conditions policy, Security policy and Procedure.

Links to these policies and others can be found in Appendix A.

2.8. Scope

2.8.1. This policy applies to all teaching, non-teaching, support, supply, peripatetic, contract staff, governors, volunteers and trustees working in or on behalf of Whitmore Park Primary School. All references in this document to 'staff' or 'members of staff' should be interpreted as relating to the aforementioned unless otherwise stated.

2.8.2. Rather than duplicating content from Keeping Children Safe in Education (September 2018) in this policy, it should be understood that Whitmore Park Primary School will always refer to this document as the benchmark for all safeguarding practice.

3. Roles and Responsibilities

3.1. The Role of the Governing Body

3.1.1. Part 2 of Keeping Children Safe in Education (September 2018) sets out the responsibilities of governing bodies. As part of these overarching responsibilities the Governing Body will;

- Ensure that they comply with their duties under legislation;
- Ensure that policies, procedure and training in Whitmore Park Primary School are effective and comply with the law at all times and that they allow concerns to be responded to in a timely manner;
- Ensure that Whitmore Park Primary School takes into account local authority and Coventry Local Safeguarding Board policies and supply information as requested by the CSCB;
- Ensure that Whitmore Park Primary School has an effective child protection policy, that it is published on Whitmore Park Primary School website or available by other means and review this annually;
- Ensure that Whitmore Park Primary School has a staff behaviour policy or Code of Conduct;
- Ensure that all staff undergo safeguarding and child protection training on induction;
- Put in place appropriate safeguarding responses for children who go missing from education;
- Appoint an appropriate member of staff from the senior leadership team to

the role of designated safeguarding lead;

- Ensure that appropriate filters and monitoring systems are in place to keep children safe online; and
- Respond to allegations of abuse against the head teacher.

3.2. The Role of the Head teacher

3.2.1. The head teacher will;

- Ensure that this policy is reviewed annually and ratified by the governing body;
- Ensure that this policy and associated procedures are adhered to by all staff;
- Ensure that all staff are made aware of the named governor for safeguarding and the designated safeguarding lead;
- Ensure that the role of 'Designated Safeguarding Lead' is explicit in the role-holder's job description;
- Decide whether to have one or more deputy safeguarding leads and ensure they are trained to the same standard as the Designated Safeguarding Lead;
- Organise appropriate cover for the role of Designated Safeguarding Lead for any out of hour/out of term activities;
- Appoint a 'Designated Teacher for Looked-After Children' to promote the educational achievement of children looked after;
- Appoint a lead for online safety; Mrs Jacqueline McGibney and Ms Kim Holland. Ensure that all recruitment follows the 'Safer Recruitment' guidance and a single, central record is maintained with details of all members of staff who are in contact with children;
- Respond to allegations of abuse against all other members of staff;
- Refer cases where a person is dismissed or left due to risk/harm to a child to the Disclosure and Barring Service as required;
- Safeguard children's wellbeing and maintain public trust in the teaching profession as part of their professional duties (Teaching Standards, 2012); and
- Ensure that children's social care have access to Whitmore Park Primary School to conduct, or to consider whether to conduct a section 47 or section 17 assessment, as per Keeping Children Safe in Education (September 2018).

3.3. The Role of the Designated Safeguarding Lead

3.3.1. The Designated Safeguarding Lead for Whitmore Park Primary School is Mrs Jacqueline McGibney

The Designated Safeguarding Lead will;

- Take overall lead responsibility for safeguarding and child protection in Whitmore Park Primary School Act as a source of support and expertise on matters relating to safeguarding and child protection to ensure that other members of staff can carry out their safeguarding duty;
- Be best placed to advise on the response to safeguarding concerns;
- Liaise with the Local Authority and work with other agencies in line with 'Working Together to Safeguard Children (2018);

- Identify if children may benefit from early help;
- Make referrals to Coventry's Multi-Agency Safeguarding Hub (MASH) where children are at risk of significant harm.
- Make referrals to the Channel programme where there is a radicalisation concern and/or support staff that make a referral to Channel;
- Support the school with regards to their responsibilities under the Prevent duty and provide advice and support on protecting children from radicalisation;
- Refer cases to the police where a crime may have been committed;
- Be available during school or college hours for staff to discuss any safeguarding concerns. In the event that they are not available, a deputy will be made available;
- Undertake training to equip them with the skills to carry out the role and update this every two years;
- Ensure all staff have read and understood Part 1 and Annex A of Keeping Children Safe in Education (September 2018);
- Update their knowledge and skills regularly and keep up with any developments relevant to their role;
- Provide staff in school with the knowledge, skills and support required to safeguard children;
- Take responsibility for the accurate and timely recording of safeguarding and child protection concerns and take overall responsibility for safeguarding and child protection files;
- Take responsibility for the transfer of safeguarding files when a child leaves Whitmore Park Primary School. Attend or ensure an appropriate representative attends multi-agency safeguarding or child protection meetings;
- Work closely with other relevant education professionals (e.g. SENCO, Virtual School Head) to ensure children with additional vulnerabilities are safeguarded;
- Promote a 'culture of safeguarding', in which every member of Whitmore Park Primary School community acts in the best interests of the child;
- Regularly meet with the safeguarding link governor and/or Chair of Governors to review safeguarding in Whitmore Park Primary School; and
- Liaise with the head teacher regarding safeguarding cases and issues.

3.3.2. Further details on the role of the Designated Safeguarding Lead can be found in Annex B of Keeping Children Safe in Education (September 2018).

3.4. The Role & Responsibilities of all Staff within School

3.4.1. School staff play a particularly important role because they are in a position to identify concerns early in order to provide help for children. All staff in Whitmore Park Primary School;

- Have a responsibility to provide a safe environment, where children can learn;

- Should know what to do if a child tells them that he/she is being abused or neglected;
- Will be able to identify indicators of abuse;
- Will be made aware of; the safeguarding and child protection policy; the school behaviour policy; the staff behaviour policy; information about the safeguarding response to children missing in education; the role of the designated safeguarding lead and systems in Whitmore Park Primary School that support safeguarding and child protection;
- Will be provided with a copy of Part 1 of Keeping Children Safe in Education (September 2018) annually and receive annually updated training on their safeguarding roles and responsibilities;
- Should know what to do if a child makes a disclosure of abuse and never promise confidentiality when a child makes a disclosure;
- Will be made aware of the early help process and understand their role in it;
- Should be prepared to identify children who may benefit from early help and will discuss early help requirements with the safeguarding lead in the first instance;
- May be required to support social workers and other agencies following a referral;
- Will be made aware of the process for making referrals to Children's Social Care (through the MASH), understand statutory assessments and the role that they may be expected to play in such assessments;
- Should be prepared to make referrals to the MASH if they have concerns about a child's welfare and understand the role that they may be expected to play in such assessments;
- Will receive regularly updated safeguarding and child protection training;
- Will receive safeguarding updates throughout the year as part of continuous professional development;
- Should be able to contribute to the development of safeguarding policy and practice.
- Should always seek advice from the Designated Safeguarding Lead if they are unsure; and
- All teachers should safeguard children's wellbeing and maintain public trust in the teaching profession as part of their professional duties (Teaching Standards, 2012).

4. Types of abuse

4.1. As outlined above, all staff will be trained in indicators of abuse and should be able to recognise signs of abuse. We recognise that abuse, neglect and safeguarding issues are complex and can rarely be covered by one label. Abuse can take many forms and can involve directly inflicting harm on a child, or failing to protect a child from harm. The four main types of abuse that staff are trained to recognise are;

- Physical abuse;
- Sexual abuse;
- Emotional abuse;
- Neglect.

4.2. Types of abuse (Taken from Working Together to Safeguard Children, 2018)

Type of abuse	Information
Abuse	A form of maltreatment of a child. Somebody may abuse or neglect a child by inflicting harm, or by failing to act to prevent harm. Children may be abused in a family or in an institutional or community setting by those known to them or, more rarely, by others (e.g. via the internet). They may be abused by an adult or adults, or another child or children.
Physical abuse	A form of abuse which may involve hitting, shaking, throwing, poisoning, burning or scalding, drowning, suffocating or otherwise causing physical harm to a child. Physical harm may also be caused when a parent or carer fabricates the symptoms of, or deliberately induces, illness in a child.
Emotional abuse	The persistent emotional maltreatment of a child such as to cause severe and persistent adverse effects on the child's emotional development. It may involve conveying to a child that they are worthless or unloved, inadequate, or valued only insofar as they meet the needs of another person. It may include not giving the child opportunities to express their views, deliberately silencing them or 'making fun' of what they say or how they communicate. It may feature age or developmentally inappropriate expectations being imposed on children. These may include interactions that are beyond a child's developmental capability, as well as overprotection and limitation of exploration and learning, or preventing the child participating in normal social interaction. It may involve seeing or hearing the ill-treatment of another. It may involve serious bullying (including cyber bullying), causing children frequently to feel frightened or in danger, or the exploitation or corruption of children. Some level of emotional abuse is involved in all types of maltreatment of a child, though it may occur alone.

Type of abuse	Information
Sexual abuse	Involves forcing or enticing a child or young person to take part in sexual activities, not necessarily involving a high level of violence, whether or not the child is aware of what is happening. The activities may involve physical contact, including assault by penetration (for example, rape or oral sex) or non-penetrative acts such as masturbation, kissing, rubbing and touching outside of clothing. They may also include non-contact activities, such as involving children in looking at, or in the production of, sexual images, watching sexual activities, encouraging children to behave in sexually inappropriate ways, or grooming a child in preparation for abuse (including via the internet). Sexual abuse is not solely perpetrated by adult males. Women can also commit acts of sexual abuse, as can other children. The sexual abuse of children by other children is a specific safeguarding issue in education.
Child sexual exploitation (CSE)	CSE is a form of child sexual abuse. It occurs where an individual or group takes advantage of an imbalance of power to coerce, manipulate or deceive a child or young person under the age of 18 into sexual activity (a) in exchange for something the victim needs or wants, and/or (b) for the financial advantage or increased status of the perpetrator or facilitator. The victim may have been sexually exploited even if the sexual activity appears consensual. Child sexual exploitation does not always involve physical contact; it can also occur through the use of technology.
Neglect	The persistent failure to meet a child's basic physical and/or psychological needs, likely to result in the serious impairment of the child's health or development. Neglect may occur during pregnancy, for example, as a result of maternal substance abuse. Once a child is born, neglect may involve a parent or carer failing to: provide adequate food, clothing and shelter (including exclusion from home or abandonment); protect a child from physical and emotional harm or danger; ensure adequate supervision (including the use of inadequate care-givers); or ensure access to appropriate medical care or treatment. It may also include neglect of, or unresponsiveness to, a child's basic emotional needs.

4.3. Indicators of abuse can be found in Appendix B.

4.4. If a child is in immediate danger or at risk of harm, a referral will be made to children's social care (through the MASH) and any member of staff can make this referral. A Designated or Deputy Designated Safeguarding Lead should be available at all times, but in exceptional circumstances the member of staff should speak to a member of the Senior Leadership Team or seek advice directly from social care and then take appropriate action. The Designated Safeguarding Lead

should be made aware as soon as possible.

4.5. Staff, parents and the wider community should report any concerns that they have about the welfare of children, however minor or seemingly insignificant. Staff should not assume that someone else will report concerns.

4.6. The school recognises that any child can be the victim of abuse and may benefit from early help. However, the school will be particularly vigilant to potential need for early help if a child;

- Is disabled and have specific additional needs;
- has special educational needs (whether or not they have a statutory education, health and care plan);
- is a young carer;
- is showing signs of being drawn in to anti-social or criminal behaviour, including gang involvement and association with organised crime groups;
- is frequently missing/goes missing from care or from home;
- is misusing drugs or alcohol themselves;
- Is at risk of modern slavery, trafficking or exploitation;
- is in a family circumstance presenting challenges for the child, such as substance abuse, adult mental health problems or domestic abuse;
- has returned home to their family from care;
- is showing early signs of abuse and/or neglect;
- is at risk of being radicalised or exploited;
- is a privately fostered child.²

4.7. Whitmore Park Primary School recognises that abuse can take many different forms. Staff will also receive training on the following issues and action will be taken if Whitmore Park Primary School believes that a child is at risk of or is the victim of;

- physical abuse;
- sexual abuse;
- child sexual exploitation;
- emotional abuse;
- neglect;
- bullying, including cyber- or online-bullying;
- criminal exploitation (including involvement in county lines);
- domestic abuse;
- fabricated or induced illness;
- faith-based abuse;
- female genital mutilation;
- forced marriage;
- gangs or youth violence;
- gender-based violence;
- hate;

² Taken from paragraph 18, Keeping Children Safe in Education (September 2018)

- honour-based violence;
- radicalisation;
- relationship abuse;
- sexual violence or sexual harassment (including peer on peer abuse);
- sexting;
- trafficking and modern slavery.

4.8. Whitmore Park Primary School will also take action to protect;

- Children missing education;
- Children missing from home or care.

4.9. There are other familial issues that can have a detrimental impact on children.

We work with other agencies in line with Keeping Children Safe in Education (2018) to support children and families in the following circumstances;

- Children facing the court procedures and/or children in the court system;
- Children with family members in prison;
- Children who are homeless.

4.10. Whitmore Park Primary School have a duty to refer any children who are living in a private fostering arrangement to the local authority.

4.11. All schools are subject to a duty under section 26 of the Counter-Terrorism and Security Act 2015 in the exercise of their functions to have “due regard” to the need to prevent people from being drawn into terrorism. See Appendix B .

4.12. If any member of staff is unsure about signs of abuse or neglect, they should speak to the Designated Safeguarding Lead.

4.13. See Appendix B for further information and guidance on the above issues. ³

5. Responding to signs of abuse

5.1. If a member of staff, parent or member of the public is concerned about a child’s welfare, they should report it to the designated safeguarding lead as soon as possible. On occasions when the designated safeguarding lead is not available, it should be reported to the deputy safeguarding lead without delay. Although any member of staff can make a referral to Children’s social care, where possible there should be a conversation with the Designated Safeguarding Lead.

5.2. If anyone other than the Designated Safeguarding Lead makes a referral to children’s social care or to the police, they should inform the DSL as soon as possible.

All staff will be alert to indicators of abuse and will report any of the following to the Designated Safeguarding Lead immediately;

³ Please note that definitions of physical, sexual, emotional abuse and neglect are contained in the main body of the policy. Further information about other safeguarding issues and indicators of abuse can be found in Appendix B

- Any concern or suspicion that a child has sustained an injury outside what is reasonably attributable to normal play;
- Any concerning behaviours exhibited by children that may indicate that they have been harmed or are at risk of harm, including unusual changes in mood or behaviour, concerning use of language and/or concerning drawings or stories.
- Any significant changes in attendance or punctuality;
- Any significant changes in a child's presentation;
- Any concerns relating to people who may pose a risk of harm to a child; and/or
- Any disclosures of abuse that children have made;

5.3. There will be occasions where a child discloses abuse directly to a member of staff. If this happens, the member of staff will;

- listen carefully to the child and believe what they are saying;
- not promise confidentiality, as information may need to be passed on so the child and family can receive additional support;
- only ask for clarification if something is unclear and will not ask 'leading' questions;
- report disclosure to the designated safeguarding lead as soon as possible, certainly by the end of the day;
- only discuss the issue with colleagues that need to know about it; and
- will write up the disclosure and pass it to the designated safeguarding lead. It is likely they will have a discussion with the DSL prior to this.

5.4. 5.4 The designated safeguarding lead will make a decision about the action that needs to be taken following a member of staff raising a concern about a child, or following a direct disclosure. The DSL may;

- Manage support for the child internally;
- Seek advice from the social worker advice line in the MASH;
- Instigate single agency intervention and work directly with the family to improve the situation;
- Offer an Early Help Assessment to provide multi-agency help to a family;
- In cases where children are deemed to be at significant risk of harm, the DSL will refer cases to the MASH for statutory intervention. Parental consent will be obtained wherever possible before referring cases to the MASH. However, if is Whitmore Park Primary School worried that telling parents will mean the child is at greater risk of harm, we may do this without informing them.
- If parents do not consent to a referral but the school believes that a child is at significant risk of harm, a referral will still be made to children's social care.

5.5. For further information about the Coventry Safeguarding Children Board's 'Right Help, Right Time' guidance, which is used by Whitmore Park Primary School to make decisions about children please visit

<http://www.Coventry.gov.uk/righthelprighttime>.

5.6. See page 16 for flowchart of actions that will be taken where there are concerns about a child (taken from Keeping Children Safe in Education, September 2018).

5.7. In cases where members of staff become aware that Female Genital Mutilation (FGM) has been carried out on a female below the age of 18, they have a mandatory duty to report this to the police without delay and will do so. Staff should refer this to the DSL, but the legislation requires regulated health and social care professionals and teachers in England and Wales to make a report to the police where, in the course of their professional duties, they either;

- are informed by a girl under 18 that an act of FGM has been carried out on her; or
- Observe physical signs which appear to show that an act of FGM has been carried out on a girl under 18 and they have no reason to believe that the act was necessary for the girl's physical or mental health or for purposes connected with labour or birth. ⁴

5.8. Whitmore Park Primary School understands that both adults and other children can perpetrate abuse, and peer on peer abuse is taken very seriously. Peer on peer abuse can include bullying, cyber-bullying, physical abuse, sexting, sexual violence and/or harassment and initiation/hazing ceremonies. The school recognise that safeguarding issues can manifest as peer on peer abuse.

5.8.1. Whitmore Park Primary School will ensure staff understand what is meant by peer on peer abuse and the school policy on peer on peer abuse is on the school website

5.8.2. The school will work to prevent peer on peer abuse by as a school we will minimise the risk of allegations against other pupils by:-

- Providing a developmentally appropriate PSHE syllabus which develops students understanding of acceptable behaviour and keeping themselves safe
- Having systems in place for any student to raise concerns with staff, knowing that they will be listened to, believed and valued
- Delivering targeted work on assertiveness and keeping safe to those pupils identified as being at risk
- Developing robust risk assessments & providing targeted work for pupils identified as being a potential risk to other pupils.

5.8.3. Whitmore Park Primary School will investigate if an allegation is made by a pupil against another student, members of staff should consider whether the complaint raises a safeguarding concern. If there is a safeguarding concern the Designated Safeguarding Lead (DSL) should be informed.

A factual record should be made of the allegation but no attempt at this stage should be made to investigate the circumstances.

⁴ introduced in Section 5B of the FGM Act 2003, as inserted by section 74 of the Serious Crime Act 2015

The DSL should contact the Referral Assessment Service (RAS) to discuss the case. The DSL will follow through the outcomes of the discussion and make a referral where appropriate.

If the allegation indicates that a potential criminal offence has taken place, RAS will refer the case to the multi-agency agency safeguarding hub where the police will become involved.

Parents, of both the student being complained about and the alleged victim, should be informed and kept updated on the progress of the referral.

The DSL will make a record of the concern, the discussion and any outcome and keep a copy in the files of both pupils' files.

It may be appropriate to exclude the pupil being complained about for a period of time according to the school's behaviour policy and procedures.

Where neither social services nor the police accept the complaint, a thorough school investigation should take place into the matter using the school's usual disciplinary procedures.

In situations where the school considers a safeguarding risk is present, a risk assessment should be prepared along with a preventative, supervision plan.

The plan should be monitored and a date set for a follow-up evaluation with everyone concerned.

5.8.4. Whitmore Park Primary School will never pass off peer on peer abuse as 'banter' or 'part of growing up'.

5.8.5. Sexual violence and sexual harassment can occur between two children of any age and sex. It can also occur through a group of children sexually assaulting or sexually harassing a single child or group of children. Staff should be aware that some groups are potentially more at risk. Evidence shows girls, SEND and LGBT children are at greater risk.

5.8.6. Whitmore Park Primary School will adhere to guidance set out in Keeping Children Safe in Education (2018) and Sexual Violence and Sexual Harassment in Schools (May 2018) when responding to incidents of peer on peer abuse.

5.9. Youth Produced Sexual Imagery ('sexting')

5.9.1. 'Sexting' refers to any sharing of youth-produced sexual imagery between children. This includes;

- A person under the age of 18 creating and sharing sexual imagery of themselves with a peer under the age of 18;
- A person under the age of 18 sharing sexual imagery created by another person under the age of 18 with a peer under the age of 18 or an adult;
- A person under the age of 18 being in possession of sexual imagery created by another person under the age of 18.

5.9.2. Whitmore Park Primary School has a responsibility to educate children in the risks relating to 'sexting' and how to keep themselves safe online. Refer to e-safety policy on line.

5.9.3. Any incidents or suspected incidents of 'sexting' should be reported to the DSL without delay.

5.9.4. Once reported to the DSL, the DSL will decide on the appropriate course of action. This could include;

- Confiscation of mobile phones in line with guidance 'Searching, Screening and Confiscation, January 2018);
- Referrals to the police and/or MASH;
- Sanctions in accordance with behaviour policy;
- Support for young people involved to prevent reoccurrence;

5.9.5. The school recognises that safeguarding incidents can be associated with factors outside the school and may take place outside of school. We will always consider contextual safeguarding factors when responding to safeguarding incidents.

5.9.6. Any incidents of 'sexting' involving the following will result in a MASH and/or Police referral;

- Adult involvement;
- Coercion or blackmail;
- Children under the age of 13;
- Extreme, or violent content;
- Immediate risk of harm.

5.9.7. Staff will not view images or videos on pupil devices. Confiscated devices will be stored securely and passed to the relevant agencies.

5.9.8. We will work with parents as necessary if their child is involved in 'sexting'.

5.9.9. We operate a culture of safeguarding and young people should feel confident to disclose if they have sent an inappropriate image of themselves. Children will always be supported to retrieve and delete the images.

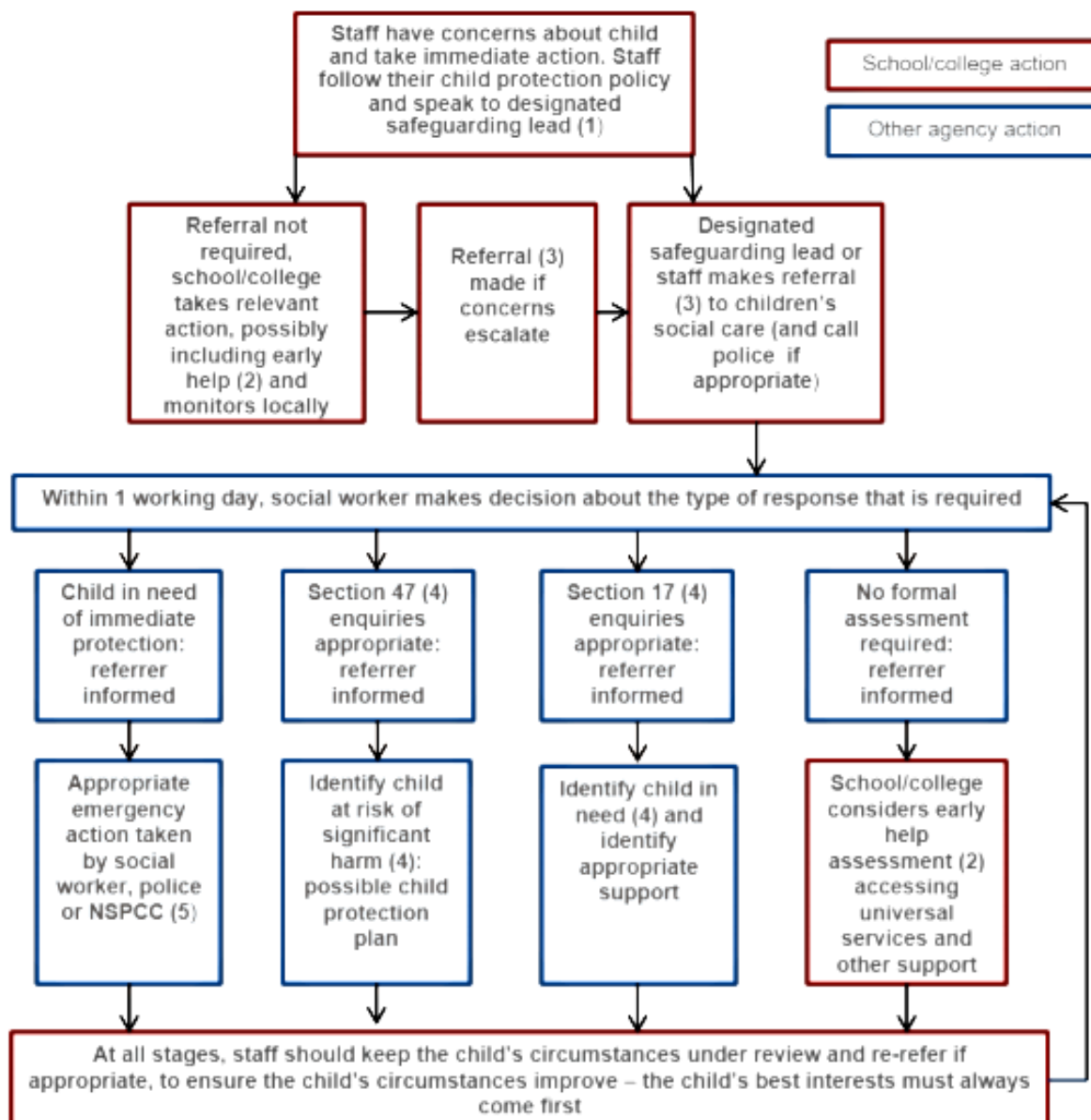
5.10. Searching, Screening and Confiscation

5.10.1. Where necessary, searching, screening and confiscation will be used to safeguard a child/children in Whitmore Park Primary School.

5.10.2. Whitmore Park Primary School adheres to 'Searching, Screening and Confiscation: Advice for Schools (January 2018).

5.10.3. Please refer to link on the school website searching, screening and confiscation guidance.

Actions where there are concerns about a child



(1) In cases which also involve an allegation of abuse against a staff member, see Part Four of this guidance.

(2) Early help means providing support as soon as a problem emerges at any point in a child's life. Where a child would benefit from co-ordinated early help, an early help inter-agency assessment should be arranged. Chapter one of [Working together to safeguard children](#) provides detailed guidance on the early help process.

(3) Referrals should follow the local authority's referral process. Chapter one of [Working together to safeguard children](#).

(4) Under the Children Act 1989, local authorities are required to provide services for children in need for the purposes of safeguarding and promoting their welfare. This can include section 17 assessments of children in need and section 47 assessments of children at risk of significant harm. Full details are in Chapter One of [Working together to safeguard children](#)

(5) This could include applying for an Emergency Protection Order (EPO).

5.11. To raise concerns about children, members of staff should contact the Multi-Agency Safeguarding Hub (MASH) by telephone to discuss the referral. They should then complete the online Multi-Agency Referral Form (MARF) and submit this to the MASH. The school will follow up referrals if we do not receive feedback from social care.

MASH Telephone number: 02476 788 555

MASH online referral form: <http://www.Coventry.gov.uk/safeguardingchildren>

Out of hours Emergency Duty Team:

02476 832 222

Prevent/Channel Referrals: Refer to MASH and to

CTU_GATEWAY@west-midlands.pnn.police.uk

5.12. If a child's situation does not appear to be improving following a referral, the school may re-refer the child. We will also consider using the LSCB's Escalation policy. to ensure that our concerns have been addressed and that the situation improves for the child.

6. Record-keeping

6.1. A written record of all safeguarding and/or child protection concerns, discussions and decisions made will be kept in individual children's files. This will be separate from the main school file and will only be accessed by the relevant safeguarding staff.

6.2. Staff will submit all concerns in writing to the DSL at the earliest opportunity. This may be after having a verbal conversation, but conversations will also be followed up in writing.

6.3. In the event that a child moves school, the safeguarding file will be transferred to the new setting securely and separately from the main school file. Once received by the new school, this school will not retain the information.

6.4. The school will seek at least two emergency contacts for every child.

6.5. All data processed by Whitmore Park Primary is done so in line with the General Data Protection Guidelines. Please see the following policies for additional information;

Please refer to the Data Protection policy and the Security policy and procedures on the school website

7. Photography and Images

7.1. Consent from parents to photograph children at school events for promotional reasons will be sought when the child joins Whitmore Park Primary. If a parent changes their mind at any time, they can let us know by contacting the school office. Photographs will be stored in line with our record retention schedule.

7.2. Parents can withdraw consent at any time and must notify Whitmore Park Primary School if they do not wish their child's photographs to be used.

7.3. Photographs of children used publicly will not be displayed with their name or other personal information.

7.4. Photographs of children will be processed in line with the General Data Protection Regulation.

Please refer to the e-safety policy on the school website

8. Early Help

8.1. Whitmore Park Primary School is committed to supporting families as soon as a possible problem arises. It is more effective to support a family through early help than reacting to a problem later. Everyone who comes into contact with children and their families and carers have a role to play in safeguarding children. Whitmore Park Primary School works closely with its neighbouring family hub to work with families in the community to improve outcomes for children.

Our linked family hub is :- Pathways and can be found on Radford Primary School, Lawrence Sauders Road, Radford, Coventry CV6 1HD tel: 02476 788444

8.2. Whitmore Park Primary School works within the LSCB 'Right Help, Right Time' framework, available on the LSCB website.

9. Staff training

9.1. In order for staff to be able to understand and discharge their safeguarding and child protection duties, Whitmore Park Primary School has committed to training staff throughout the academic year. All staff members will be made aware of Whitmore Park Primary School's safeguarding processes and structures and will receive training on these as part of their induction. As part of this training and their annual refresher, they will also receive;

- This 'Safeguarding and Child Protection policy';
- The staff Code of Conduct
- Copies of Part 1 and Annex A of Keeping Children Safe in Education (September 2018)
- School procedures for Children Missing Education
- The school Behaviour policy

9.2. Staff at Whitmore Park Primary School will;

- July Team Teach Training
- September Safeguarding Training
- DSL Briefings
- LSCB training for appropriate staff
- E-bulletins etc.
- Governor training, Safeguarding and Health and Safety
- Staff Mental Health Training

9.3. Whitmore Park Primary School recognise that children may engage in risky behaviours that may put them at additional risk of danger. These can include drug taking, alcohol abuse, truanting and 'sexting'⁵. Staff will be training in these areas in order to be able to further recognise if a child is at risk of harm.

⁵ Also known as 'youth produced sexual imagery'

10. Safer Recruitment

10.1. Whitmore Park Primary School is committed to providing children with a safe environment, in which they can learn. We take safer recruitment seriously and all staff are subject to the following checks;

- Identity check;
- DBS clearance;
- Prohibition from teaching checks (where required);
- Barred List check;
- Section 128 checks (as required - leadership and management);
- Reference check (two references required);
- Professional qualifications check ;
- Right to work in the UK check;
- Further checks for those who have lived outside the UK;
- Disqualification Under the Childcare Act 2006 checks (as required).

10.2. A record of all checks on members of staff will be held on the Single Central Record.

10.3. All new members of staff will be required to obtain DBS clearance Whitmore Park Primary School, reserves the right to re-check DBS clearance for any member of staff where information is received that indicates that they may pose a risk to children.

10.4. At least one member of every interview panel will have undergone Safer Recruitment training.

10.5. We take proportionate decisions on whether to check individuals beyond what is required.

10.6. Any visitor to the school who has not been subject to the necessary checks will be supervised at all times.

10.7. All safer recruitment practices at Whitmore Park Primary School comply with Keeping Children Safe in Education (September 2018). See Part 3 of Keeping Children Safe in Education (September 2018) for further information.

10.8. See Safer Recruitment policy for further details.

11. Allegations of abuse against staff

11.1. Whitmore Park Primary School takes all allegations against staff seriously and will manage them in line with this policy, Part Four of Keeping Children Safe in Education (September 2018) and the LSCB Guidance, 'Managing Allegations against Staff and Persons in a Position of Trust'.

11.2. If a concern or allegation of abuse arises against the Head teacher, it must be reported to the Chair of Governors without delay.

11.3. If a concern or allegation of abuse arises against any member of staff other than the Head teacher, it must be reported to the Head teacher without delay.

11.4. Allegations of abuse against staff must be reported to the Head teacher or Chair of Governors as appropriate and not discussed directly with the person involved.

11.5. The Head teacher or Chair of Governors should consider if the allegation meets the threshold for Designated Officer intervention. The Local Authority designated officer is Angie Bishop and contact details can be found at the front of this policy.

11.6. Concerns relating to a position of trust issue will be referred to the Local Authority designated officer within 24 hours.

11.7. If a child has suffered abuse or harm, a MASH referral will also be made.

11.8. In the instances where an allegation is dealt with internally, the Local Authority designated officer will provide information and support to Whitmore Park Primary School in managing the allegation.

11.9. A referral to the Disclosure and Barring Service will be made if a member of staff is dismissed or removed from their post as a result of safeguarding concerns, or would have been removed if they had not have resigned.

Whistleblowing

11.9.1. Whitmore Park Primary School operates a culture of safeguarding and all staff should report any concerns about poor or unsafe practice, or Whitmore Park Primary School safeguarding processes to the senior leadership team.

11.9.2. The senior leadership team will take all concerns seriously.

11.9.3. In the event that a member of staff is unable to raise an issue with senior leadership in school, they should refer to Part 1 of Keeping Children Safe in Education for additional guidance on whistleblowing procedures.

12. Promoting safeguarding and welfare in the curriculum

12.1. Whitmore Park Primary School recognises the importance of teaching children how to stay safe and look after their mental health and are committed to equipping children with the skills and knowledge to have successful and happy lives.

12.2. Children at Whitmore Park Primary School will receive the following as part of our promotion of safeguarding across the curriculum:

- The children receive weekly PSHE lessons that cover a range of safeguarding issues across the year, including staying safe at home, outside, in relationships, online and in terms of emotional wellbeing. These sessions also teach the emotional literacy and life skills needed to make safe choices in their present and future lives. The content of our PSHE scheme is decided annually based on the priorities identified for our children's wellbeing.
- Weekly assemblies reinforce our school's 'Golden Values' and promote the children's welfare, such as anti-bullying week or online safety days.

- The school invites several outside expert agencies each year to speak to the children about a range of mental health and safeguarding issues, including Positively Mad and Helping Hands.
- Relationships and Sex education is taught in years 1-6 as part of our PSHE curriculum.

13. Children Looked After

13.1. The most common reason for children to be looked-after is because they have experienced abuse and/or neglect. Whitmore Park Primary School recognises that children looked after may have additional vulnerabilities. The Designated Lead for Looked-After and Previously Looked-After Children is Jacqueline McGibney - Headteacher

13.2. Staff will receive training on how to best safeguard children who are Looked-After and Previously Looked-After.

13.3. The school will work with Personal Advisors when children leave care (where applicable).

13.4. Whitmore Park Primary School is committed to working with other agencies to ensure the best outcomes for Looked-After and Previously Looked-After children.

14. Children with Special Educational Needs

14.1. As outlined in Keeping Children Safe in Education (2018), Whitmore Park Primary School is aware that children with additional needs or disabilities may be more vulnerable to abuse and additional barriers may exist when recognising abuse and neglect. This could be because;

- assumptions that indicators of possible abuse such as behaviour, mood and injury relate to the child's disability without further exploration;
- being more prone to peer group isolation than other children;
- the potential for children with SEN and disabilities being disproportionately impacted by behaviours such as bullying, without outwardly showing any signs; and
- communication barriers and difficulties in overcoming these barriers.⁶

14.2. Staff will be trained in recognising signs of abuse in children with SEN and disabilities.

14.3. Staff will take into account the needs of a child when responding to concerns of abuse or when taking a disclosure. We recognise that some children require specialist intervention to communicate and advice from the SENCO will be sought in these circumstances.

14.4. Safeguarding learning opportunities within the curriculum will be appropriately differentiated to ensure all children can access it.

⁶ Keeping Children Safe in Education, September 2018

15. Use of reasonable force

15.1. There may be occasions when staff are required to use reasonable force to safeguard children. We will not use any more force than is necessary.

We have a Team Teach booklet but have not had to Team Teach any pupil last academic year, however we still undertake Team Teach training to ensure that there are enough staff within years groups should the situation arise.

16. Children Staying with host families (see Annex E KCSIE)

17. Summary

17.1. The school is committed to safeguarding children and will always make safeguarding decisions that are in the best interests of each child. For further information or if you have any queries about this policy, please contact the school.

Appendix A

The school's safeguarding policy is intended to be used in conjunction with the following policies;

The school adheres to Coventry LSCB Policies, which can be found here:

<http://www.ProceduresOnline.com/covandwarksscb/contents.html>

- **Allegations Against Staff or Persons in a Position of Trust policy** (LSCB) (with local authority)
- Behaviour policy and Physical Restraint policy (on the website)
- Complaints Procedure (on the website under Procedures)
- **Critical Incident Plan** (to be agreed December 2018)
- Data Protection policy (on the website)
- Drugs and Alcohol policy (Staff Code of Conduct on the website)
- Equality Scheme action plan (on the website under Procedures)
- **Escalation and Resolution of Professional Disagreements** (LSCB)
- GDPR Privacy Notice (on the website under Procedures)
- GDPR Privacy Notice (child friendly)
- Intimate Care policy (on the website)
- Online Safety policy (on the website)
- Supporting children with medical need (on the website)
- Sex and Relationships Education policy (on the website)
- Site Security policy (on the website)
- SEND policy (on the website)
- Trips and Visits policy (on the website)
- Whistleblowing policy (on the website)

Appendix B - Further Safeguarding Information

Types of Abuse

As outlined in paragraph 4.6, the school will take action if we believe a child is at risk of or is suffering from abuse. Abuse is not limited to physical, emotional, sexual abuse and neglect. For further information on the definitions of the types of abuse below, please refer to Keeping Children Safe in Education 2018, Annex A.

See below for policy information relating to other key safeguarding issues. All decisions taken in responding to concerns of abuse will be taken in the best interests of the child.

Bullying, including cyber- or online-bullying

The school takes all forms of bullying seriously and will respond sensitively and quickly to any reported bullying. Children should report any bullying to the DSL or to any trusted member of staff and we will work to resolve it.

We also teach children about the dangers of bullying through our curriculum.

Bullying can take many forms and we have several policies that cover different aspects of bullying. Please see the Anti-Bullying policy and the Behaviour policy

Criminal exploitation (including involvement in county lines)

We feel as a primary school this is not relevant.

Domestic abuse

The school takes part in the Encompass Project which is an initiative ran by the police to inform school the following day after a reported incident.

Fabricated or induced illness

We are very rigorous on pupils attendance where this may be an issue.

Faith-based abuse

As a school this has not been an issue.

Female genital mutilation

The school is vigilant when holiday hotspots are requested by parents and involve other agencies eg doctors.

Homelessness

School work with all agencies looking after families that have been evicted from their homes.

Radicalisation and Extremism - Our staff are trained in their duty in terms of PREVENT and how to recognise potentially concerning behaviour and prevent the children from being exposed to risks that could cause them harm or expose them to criminal activity. When a concern is raised discussion will take place with

agencies and referrals made to Channel. This is where structured interventions are implemented via a multi-agency approach.

Relationship abuse

We work closely with parents and families and helped support managed moves.

Sexting

We are vigilant when dealing with out of school of issues when dealing with this subject.

Children missing from education, home or care

The school will also take action to protect;

- Children missing education
- Children missing from home or care

Children Missing Education

These can be found on the school website 'www.WhitmorePark.org'

Children Missing from home or care

These can be found on the school website 'www.WhitmorePark.org'

Private Fostering

The school have a duty to refer any children who are living in a private fostering arrangement to the local authority.

We will do this through a MASH referral. It is important that parents/carers inform us if a child is going to be staying at an alternative address to that of their primary care-givers for more than 28 days.

Indicators of abuse

See below for possible indicators of abuse. (Taken from What to do if you are worried a child is being abused, 2015)

- Children whose behaviour changes - they may become aggressive, challenging,
- disruptive, withdrawn or clingy, or they might have difficulty sleeping or start
- wetting the bed;
- Children with clothes which are ill-fitting and/or dirty;
- Children with consistently poor hygiene;
- Children who make strong efforts to avoid specific family members or friends,
- without an obvious reason;
- Children who don't want to change clothes in front of others or participate in
- physical activities;
- Children who are having problems at school, for example, a sudden lack of

- concentration and learning or they appear to be tired and hungry;
- Children who talk about being left home alone, with inappropriate carers or with
- strangers;
- Children who reach developmental milestones, such as learning to speak or walk,
- late, with no medical reason;
- Children who are regularly missing from school or education;
- Children who are reluctant to go home after school;
- Children with poor school attendance and punctuality, or who are consistently late
- being picked up;
- Parents who are dismissive and non-responsive to practitioners' concerns;
- Parents who collect their children from school when drunk, or under the influence
- of drugs;
- Children who drink alcohol regularly from an early age;
- Children who are concerned for younger siblings without explaining why;
- Children who talk about running away; and
- Children who shy away from being touched or flinch at sudden movements.

The school recognises that the above list of indicators is not exhaustive and staff will receive training on indicators of abuse.